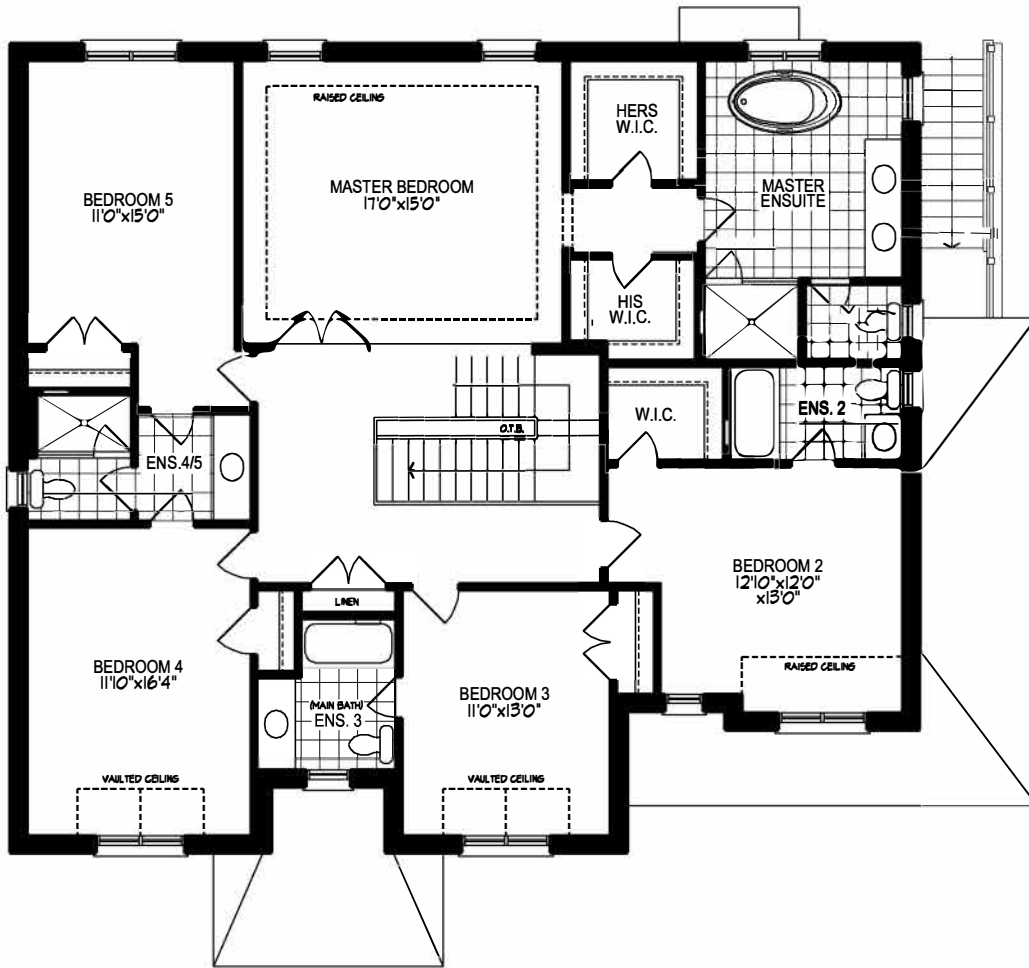


**GROUND FLOOR PLAN**

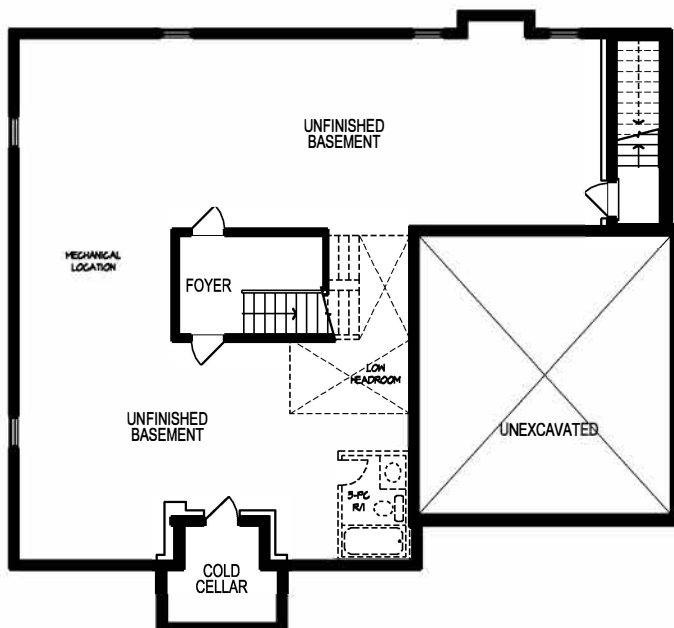
**2497 DONNAVALE DRIVE, MISSISSAUGA, ON**

**3561 S.F.**

Materials, specifications, and floor plans are subject to change without notice. All renderings are artist conceptions. All floor plans are approximate dimensions. Actual usable floor space may vary from the stated floor area. E. & E.O. NOTE: Includes approximately 82 sq. ft. of Finished Area in Basement.



**SECOND FLOOR PLAN**



**BASEMENT PLAN**